



FARNHAM CENTRE FOR HEALTH, HALE ROAD, FARNHAM, GU9 9QS
 PHONE: 01252 723122

NEW APPOINTMENT SYSTEM



We are launching our new system, Patches, in May. If you have an urgent request, then please contact us by phone.

Any routine requests should be put in through the new Patches system to be triaged by our reception team and we will respond to these within 3 working days. If you are unable to use Patches then please call and we will help put your request on.

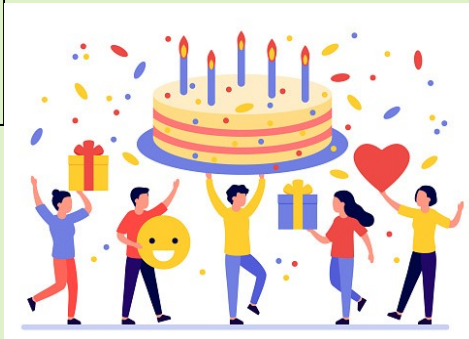
WELCOME NEW TEAM MEMBERS

TWO YEARS OF FPHG

Since we became Farnham Park Health Group, we have seen many new faces join our dedicated team across a multitude of roles:

- Dr Zara Hasafa and Dr Yasmine Weeks have joined us as our new GP Partners.
- Jodie Williams has taken up a post as a Advanced Paramedic Practitioner.
- Becky Smith and Dee Erniulienė as Practice Nurses.
- Annette Pelling and Charlotte Mohan as our new HealthCare Assistants.
- Ravi Mondair, Noor Jubair, and Ahmed Elsharif as our pharmaceutical team.
- Ali is the Assistant to the Practice Manager.
- Sandra, Michelle, Linda, Janet, Ellen, Alicia, Catherine, Chloe, Aga and Donna have all joined our Reception Team.
- Sarah, Dan, Haylee, Gracie, Kate and Max have all joined our Admin Team.

Following the merger of River Wey and The Ferns Medical Practices back in April 2021, our staff have been working tirelessly to deliver care for our patients. We would like to take this moment to thank all of our patients for their continued support as we move into the future.



JOIN OUR PPG

COVID & FLU VACCINATIONS

Our Patient Participation Group provides valuable feedback and allows our patient's to make sure their voices are heard. If you would like to join, please complete the form on our website, or email our reception team at reception.fphg@nhs.net and we will contact you to let you know that you have been added.

Our team have been working hard to provide **COVID** vaccinations to all of our patients, and we are proud to announce that so far, over **15,000** of our patients have been vaccinated, with over **45,000** vaccines given. We are currently inviting all of our over 75s and Immunosuppressed patients for a spring booster. If you are in this category, we will contact you by text or phone call to get you booked in.





Image: Frreepik.com

NEW ROLES IN GENERAL PRACTICE

To meet the needs of our patients, we are able to bring new roles to support GPs and patients alike in providing broader care.

Physicians Associate: Physicians Associates work under the supervision of a GP. They are able to carry out many of the duties a GP does, however they are unable to prescribe medication.

Clinical Pharmacist: These individuals are responsible for carrying out medication and long-term condition reviews, as well as dealing with medication queries in tandem with GPs.

Advanced Paramedic Practitioner: These individuals are trained to provide care that does not necessarily require the intervention of a GP. They can see patients for a range of issues and are able to prescribe medication.

Pharmacy Technician: Pharmacy Technicians work to support the delivery of safe, effective and efficient systems for medication optimisation, repeat prescribing, reducing medicine waste and maximising patient outcomes.

SELF HELP

Choose Well

For more information visit: www.nhs.uk/livewell

 Self care Keep a well-stocked medicine and first aid cupboard for minor ailments	 Pharmacy Pharmacists are highly trained professionals who can treat or advise on minor illnesses	 NHS 111 Urgent medical help fast, available 24/7	 GP Practice Urgent and routine appointments on weekdays, evenings and weekends	 Urgent Care Call 111	 A&E or 999 For life threatening emergencies and serious injuries only
--	--	--	--	------------------------------------	---

GOING TO A PHARMACY

Did you know your local pharmacist may be able to provide you some assistance for problems such as:

- Coughs & Colds
- Sore throats
- Tummy trouble
- Aches & Pains
- Many other minor ailments

Did you know there are different ways to seek treatment for yourself or your child?

- You can access Frimley's 'Healthier Together' page through our website under the 'Children Self-Care' Section. Here you will be able to find advice on what is and isn't normal for young children as well as a range of care advice.
- For advice on healthy living for adults, please visit nhs.uk/livewell. This includes a wide variety of advice on things such as mental wellbeing as well as lifestyle advice.

Healthier Together

Local advice and support to help manage and improve the health and wellbeing of babies, children, and young people



Image: Frreepik.com

MENTAL HEALTH SERVICES

If you feel you require mental health support then we are here to support you.

To self refer for mental health treatment you can call TalkPlus on 01252 533 355

- If you are in urgent need of support then please be aware of the Crisis Line number 0800 915 4644. They are open 24/7.
- Also from 6pm to 11pm Mon-Fri, or 1230 to 11pm on the weekends there is a drop in service called Safe Haven at Walpole House, Pickford St, Aldershot if you are experiencing a mental health crisis.

SOCIAL PRESCRIBING

Social Prescribing is an approach used by the NHS to help connect people to activities, groups and services in their community.

The aim is to help meet practical, social and emotional needs to improve health and wellbeing.

If you feel that you would benefit from this, please contact us and we can arrange a referral to our Social Prescriber.